



5700

Automatic Scrubber



5700

Automatic Scrubber

Everything a Scrubber Should Be



Simple controls and easy-to-read gauges mean most operators can do a perfect job the first time they use the 5700.

To precisely meet your cleaning needs, Tennant created the Model 5700: a walk-behind automatic scrubber with 20 different variations.

Choose from:

- Three scrubbing paths: 28, 32 or 36 inches (700, 800, 900 mm).
- Disc or cylindrical scrub heads.
- Easy-to-use standard 5700 or automated "one-button" 5700XP.

Combining an advanced airflow system with a parabolic squeegee assembly, the 5700 picks up all the cleaning solution it puts down – even on the sharpest turns. And with 33% fewer parts than other scrubbers, there is less to break. Easily accessible, modular component assemblies allow quick and easy repair.

The 5700: everything a scrubber should be. And much, much more.

Productivity-Enhancing Options

Clean tight corners and hard-to-reach spaces with an optional **Off-Aisle Power Wand**.

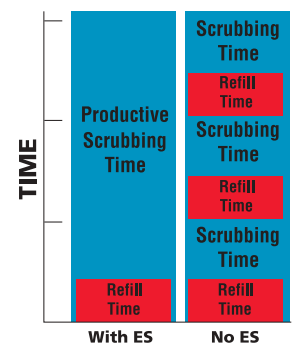


Get more work done with the **ES™** solution recycling feature. The Extended Scrubbing is an

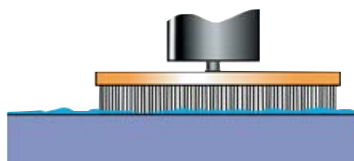
optional that feature saves you time and improves your productivity. With ES, you can

clean up to 2-1/2 hours without interruption. ES uses less solution and less water, effectively eliminating down

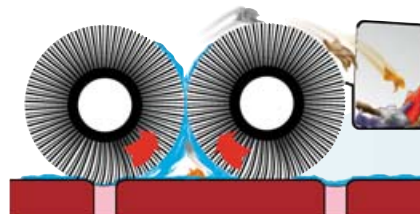
time spent emptying and refilling solution and recovery tanks.



The 5700 comes in an "XP" version for automated scrubbing. With the 5700XP, you set the controls to match your floor conditions. Operators will clean productively after just minutes of training.



Choose disc brushes or pad drivers for smooth floors without debris. Adjustable down-pressure allows two high-speed discs to dislodge stubborn grime or clean lightly over sensitive surfaces.



Choose the cylindrical scrub brush head for floors with occasional debris, or for tile surfaces. It simultaneously scrubs and picks up small debris.

Shock-Absorbing Frame

Composite material shock-absorbing frame and scrub head linkage protect critical components from damage.

Durable Construction

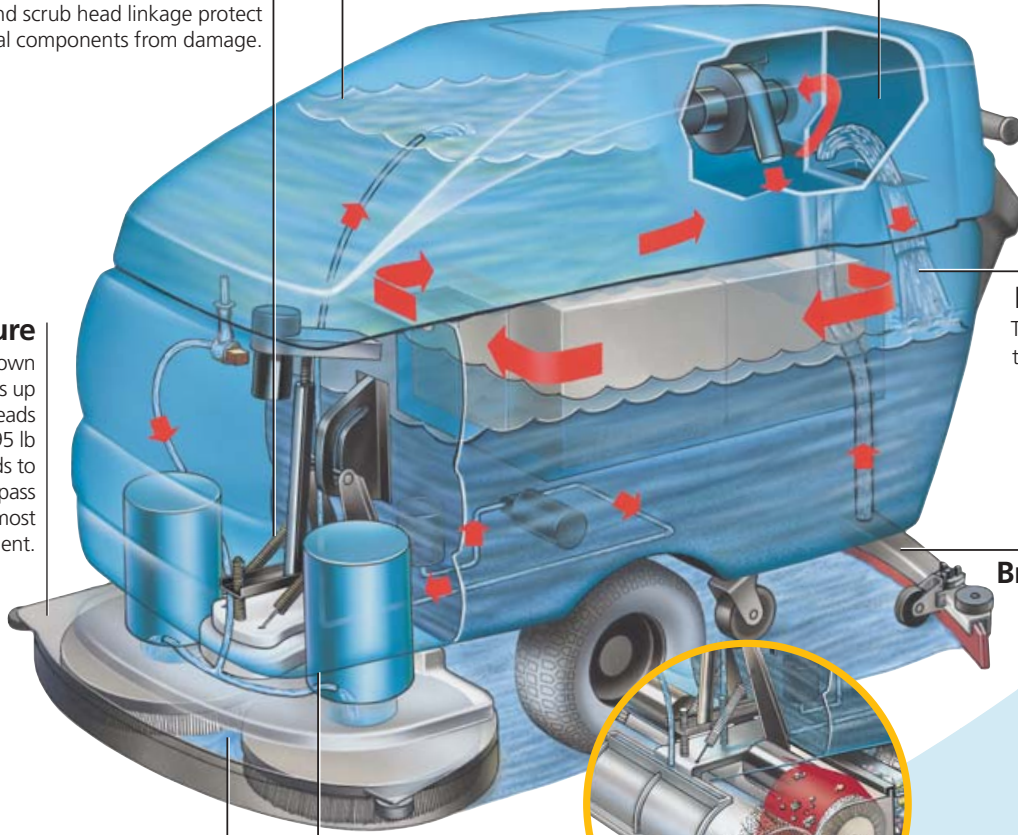
Thick polyethylene construction and aluminum squeegee assembly and scrub heads provide excellent impact and corrosion resistance, for long life.

Demisting Chamber

10-gal/38 L demisting chamber keeps moisture out of vacuum fan and extends motor life.

Down Pressure

Fully adjustable down pressure provides up to 300 lb on disc heads (hd motors) and 95 lb on cylindrical heads to provide one pass cleaning in the most demanding environment.



Recovery Tank Filter

Tank filter prevents contamination from entering the vacuum and extends motor life.

Breakaway Squeegee

Parabolic breakaway squeegee accurately tracks the scrubber on tight turns and provides excellent solution retrieval. Linatex blades provide optimum performance, chemical resistance and require no tools to change.

Interchangeable Heads

All 5700 scrubbers are designed to accept a 28, 32, or 36 in. path disc or cylindrical scrub head. Each unit can be upgraded to a different path or type in minutes without tools.

High Speed Scrub Brush Motors

Brush motors on the 5700 disc model provide up to 320 rpm and 750 rpm on the cylindrical models. Both provide optimum cleaning performance.

Cylindrical Scrub Heads

Cylindrical scrubbing heads are for sweeping floors with light or occasional debris and for tile surfaces. Cylindrical heads deep-clean grout lines and eliminate dangerous streaking.



Ideal for cleaning tile grout lines commonly found in shopping malls.



The 5700 maintains the attractive shine on finished floors.



The 5700 runs long to clean large areas like warehouses and factories.

5700 AUTOMATIC SCRUBBER SPECIFICATIONS

MACHINE DIMENSIONS

Length	64 - 66.5 in	1630 - 1690 mm
Width (without squeegee)	28.25 in	720 mm
Width (with squeegee)	37.5 - 45.5 in	955 - 1155 mm
Height	43 in	1090 mm
Weight (with batteries)	817 lb	370 kg

SCRUBBING SYSTEM

Scrubbing path	28, 32, 36 in	700, 800, 900 mm
Scrub head	2 discs or 2 cylindrical brushes	
Motor, disc		
(Standard) 320 rpm	.6 hp	.45 kW
(Heavy-duty) 300 rpm	1.0 hp	.75 kW
Motor, cylindrical 750 rpm	.75 hp	.56 kW

RECOVERY SYSTEM

Solution tank polyethylene	30 gal	114 L
Recovery tank polyethylene	30 gal	114 L
Demisting chamber	10 gal	38 L
Vacuum fan 14,000 rpm	.8 hp	.6 kW

PROPELLING Power transaxle propulsion

Transaxle Motor	.5 hp	.37 kW
-----------------	-------	--------

STANDARD MODEL 5700 EQUIPMENT

Height adjustable operator console, no-tool brush and squeegee change, auto vac fan, water and brush start, pneumatic, non-marking tires, and stop with propel, brush pressure gauge battery level indicator, battery condition meter

5700 XP EQUIPMENT

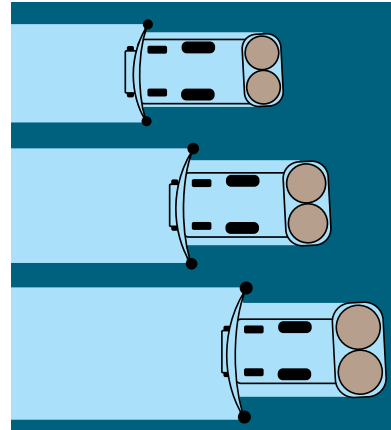
Auto squeegee lift, auto brush and squeegee up "One button" preset scrubbing and down

TENNANT VALUE ADDED EQUIPMENT INCLUDES:

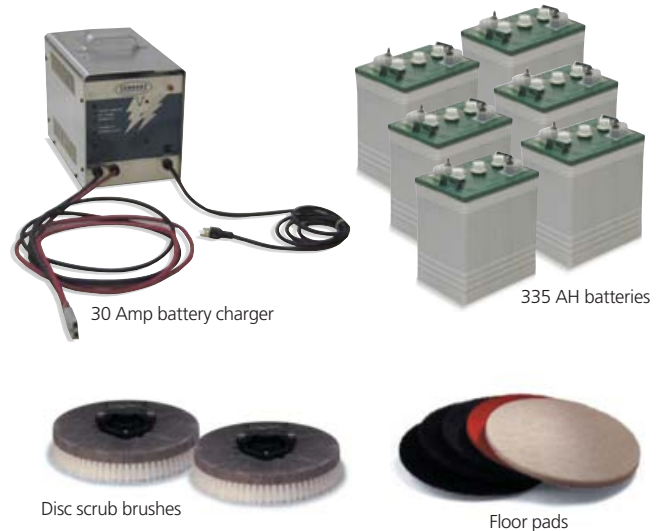
No-tool interchangeable scrub heads, modular construction, demisting chamber, non-corrosive duramer tanks, impact-resistant frame, water shut-off

TO CUSTOMIZE, HERE ARE YOUR OPTIONS:

ES (extended scrubbing), auto-stop button, off-aisle power wand, solid and foam filled tires, 1.0 hp (.75 kW) heavy-duty brush drive motor on 32-in (800 mm) width machine only, wall protection rollers, dual vacuum fans on 32-in , 30 A fully automatic charger, 335 Ah, 6-volt batteries, urethane and gum rubber, squeegees, tight-aisle squeegee on 28-in, parking brake



The 5700 is available in three different scrubbing path widths: 28 and 32 inches (700 and 800 mm) for scrubbing narrow congested areas; or 36-inches (900 mm) for added productivity in wide-open spaces.



ISO 9001 Certified (Specifications subject to change without notice)

Duramer and ES are United States trademarks of the Tennant Company

Creating a cleaner, safer world™

Tennant Company offers the most complete line of floor and surface maintenance equipment, floor coatings, brushes and cleaning detergents in the world for the industrial, commercial and outdoor cleaning markets. Our sales and service networks provide you with integrated custom cleaning solutions to meet any floor care need.



Tennant Company

701 North Lilac Drive, Minneapolis, MN 55440, USA
 Mailing Address: P.O. Box 1452, Minneapolis, MN 55440, U.S.A.
 Tel: (763) 540-1200, Toll-free: (800) 553-8033
 Fax: (763) 513-2144, In Quebec, call: (514) 335-6061

Commercial Products

12875 Ransom Street, Holland, MI 49424, USA
 Tel: (616) 786-2330, Toll-free: (800) 982-7658
 Fax: (800) 678-4240, E-mail: tennantinfo@aol.com
 www.tennantco.com

Authorized Tennant Sales Representative

